



Village Lifestyle Park

villagelifestylepark.com.au

“THE HAZELWOOD”



*Shown with traditional façade
Also available in coastal façade*

Value - Quality - Comfort

**House & Land
Package
Available in this design
on Lots
52, 56, 57 & 58***



2



1



2



1

\$220,500.00 (inc GST)

*Subject to availability



anchor homes

55 Industrial Road, Stratford, Vic 3862

P: (03) 5145 7110 F: (03) 5145 7155

E: sales@anchorhomes.com.au

www.anchorhomes.com.au



"THE HAZELWOOD"



2



1



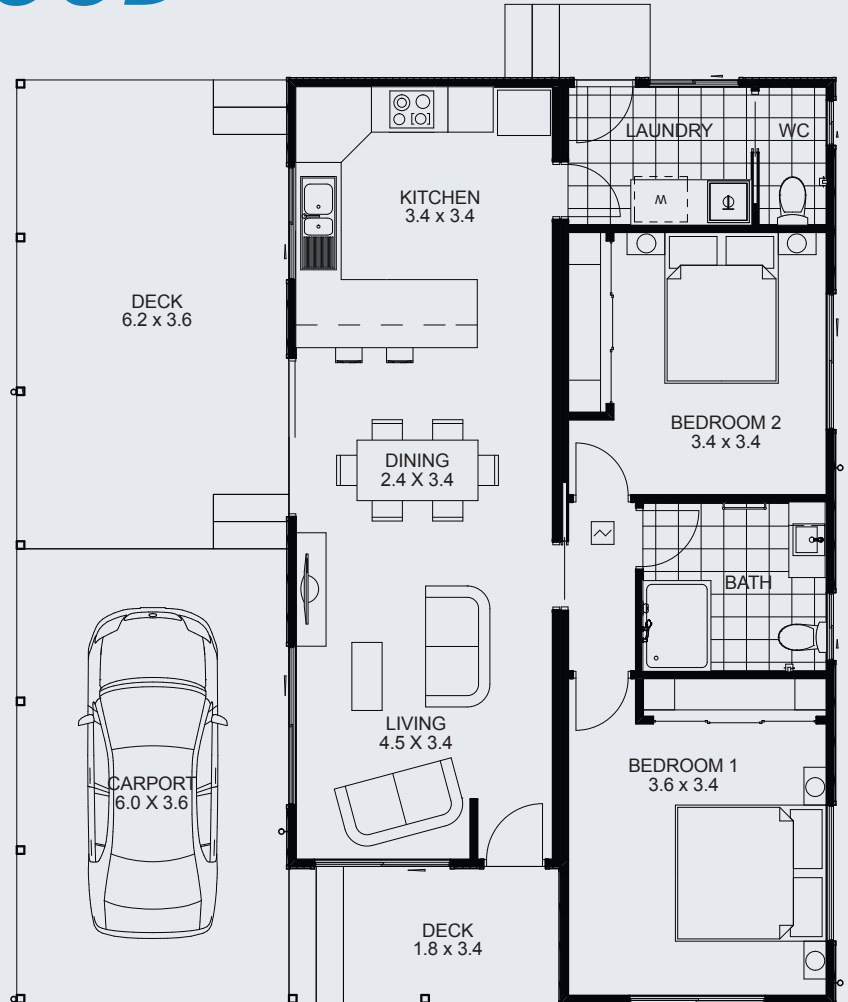
2



1

SIZE

Living	81.4sqm	8.76sq
Carport	21.6sqm	2.32sq
Verandah	6.5sqm	0.68sq
Deck	22.3sqm	2.40sq
Total	131.8sqm	14.16sq



FEATURES

- Open plan living
- Spacious bedrooms with built-in robes
- Large corner kitchen pantry
- Floor coverings - carpet, vinyl and tiles
- Reverse-cycle split-system heating and cooling
- Large covered deck area
- Large single carport
- Colorbond® lock-up shed
- Colorbond® fencing
- Concrete driveway and paths
- 2000ltr Rain water tank
- Clothesline and TV antennae

For more information contact Trudi on 03 5145 7110

Village Lifestyle Park - 03 5174 2384

